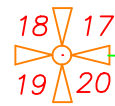


3/4" IRON  
PIPE IN CASE



S 89°25'31" E  
2624.19

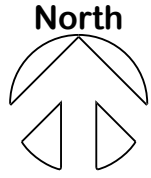
S 89°25'31" E  
664.76

DNR MONUMENT  
W/ALUMINUM DISK

GOV'T  
LOT 1

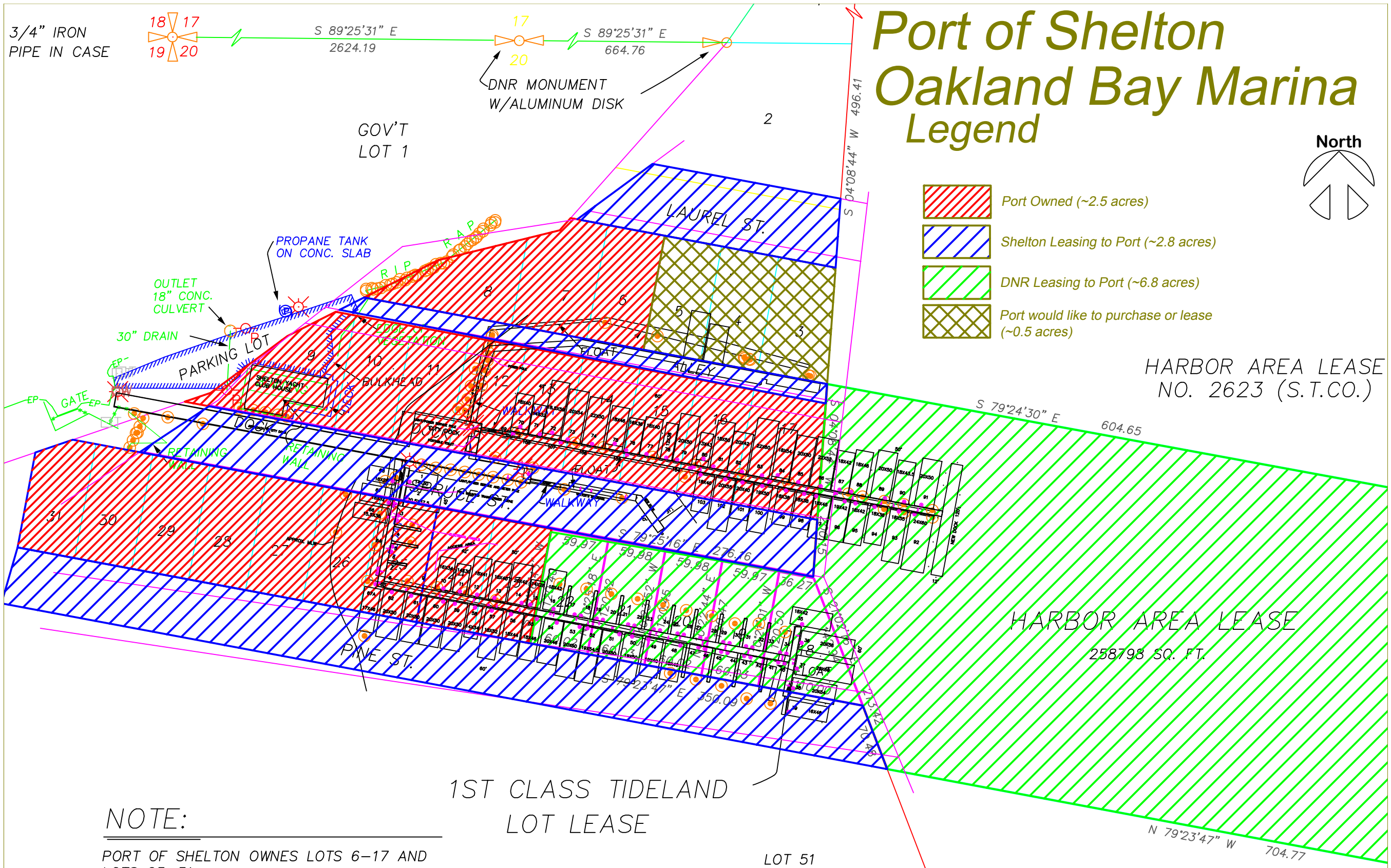
2

# Port of Shelton Oakland Bay Marina Legend



- Port Owned (~2.5 acres)
- Shelton Leasing to Port (~2.8 acres)
- DNR Leasing to Port (~6.8 acres)
- Port would like to purchase or lease (~0.5 acres)

HARBOR AREA LEASE  
NO. 2623 (S.T.CO.)



HARBOR AREA LEASE  
258798 SQ. FT.

1ST CLASS TIDELAND  
LOT LEASE

LOT 51

N 79°23'47" W  
704.77

### NOTE:

PORT OF SHELTON OWNES LOTS 6-17 AND  
LOTS 23-31.

CITY OF SHELTON LEASES TO THE PORT OF SHELTON  
RIGHT-OF-WAY FOR PINE ST., LAUREL ST., SPRUCE ST.,  
AND UNNAMED ALLEY BETWEEN LAUREL ST. AND SPRUCE ST.  
SEE AGREEMENTS DATED SEPTEMBER 1995 AND FEBRUARY 2007

HARBOR AREA LEASE  
NO. 2595 (S.T.CO.)

**A1**